

Notice of Submission of Environmental Assessment - Revised

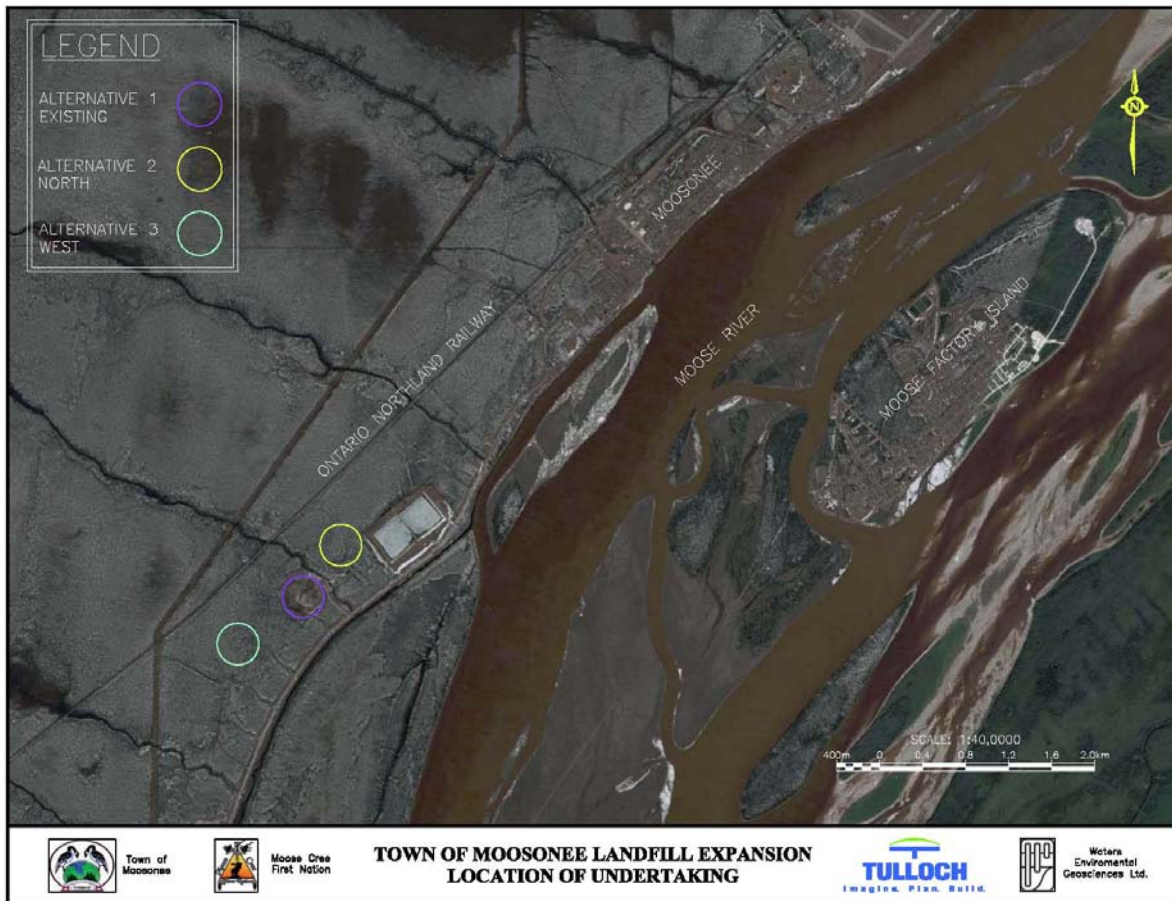
Moosonee Landfill Expansion, The Corporation of the Town of Moosonee

The Corporation of the Town of Moosonee has completed the environmental assessment for the Moosonee Landfill Expansion. As required under section 6.2(1) of the *Environmental Assessment Act* and according to the terms of reference approved by the Minister of the Environment on July 9, 2001, the Corporation of the Town of Moosonee has submitted its environmental assessment to the Ministry of the Environment for review and approval.

The Corporation of the Town of Moosonee currently owns and operates the existing Moosonee Landfill which services the residents of the Town of Moosonee. This landfill is currently over capacity. The Moose Cree First Nation (MCFN) owns and operates the Moose Factory Island Landfill which services all island residents including members of the MCFN reserve, Local Services Board, MCFN Education Board and the Hospital/Federal Compound. This landfill is nearing the end of its design life. The purpose of this undertaking was to identify a solution to the waste management issue that both communities are experiencing.

Although several alternatives were investigated under the EA process, the preferred alternative is to continue landfilling over the existing Moosonee Landfill by building the site vertically on top of historic waste deposits. The expanded landfill will accept domestic and commercial waste from both the Town of Moosonee and the existing users of the Moose Factory Island Landfill.

The following is the study area map for the two communities, outlining the existing and alternative locations for the proposed landfill expansion.



As required under the *Environmental Assessment Act*, the environmental assessment will be available for public review and comment from **October 30, 2009 to December 18, 2009**. Please note that the start of the public comment period was incorrectly identified in the previous notice as October 26, 2009.

You may review the environmental assessment during normal business hours at the following locations:

Location	Address	Phone Numbers
Ontario Ministry of the Environment, Environmental Assessment & Approvals Branch	2 St. Clair Avenue West, Floor 12A Toronto, Ontario M4V 1L5	(416) 314-8001 or 1-800-461-6290
The Corporation of the Town of Moosonee	5 First Street, PO Box 127 Moosonee, Ontario P0L 1Y0	(705) 336-2993
Moose Cree First Nation	PO Box 190, Moose Factory, Ontario P0L 1W0	(705) 658-4619
Ontario Ministry of the Environment, Timmins District Office	Ontario Government Complex Hwy 101 E., PO Bag 3080 South Porcupine, Ontario P0N 1H0	(705) 235-1500 or 1-800-380-6615

The document can also be downloaded from the Town of Moosonee website at <http://www.moosonee.ca>.

Anyone wishing to provide comments on the environmental assessment must submit their comments in writing and/or by fax to the Ministry of the Environment by December 18, 2009. All comments must be submitted to:

Michelle Fromme-Marcellin, Project Officer
Ministry of the Environment
Environmental Assessment and Approvals Branch
2 St. Clair Avenue West, Floor 12A
Toronto, Ontario M4V 1L5
Tel: 416-314-3352/1-800-461-6290
Fax: 416-314-8452

A copy of all comments will be forwarded to the proponent for its consideration.

If you have any questions or need further information about this project, please contact:

Michael Tulloch, P. Eng., O.L.S., C.L.S.,
200 Main Street, PO Box 579,
Thessalon, Ontario, P0R 1L0,
Tel: 705-842-3372
Fax: 705-842-2658

Under the *Freedom of Information and Protection of Privacy Act* and the *Environmental Assessment Act*, unless otherwise stated in the submission, any personal information such as name, address, telephone number and property location included in a submission will become part of the public record files for this matter and will be released, if requested, to any person.